



CULTIVATE
BLOOMINGTON

DESIGNED BY MICHELLE HAY

DESIGN RESEARCH INSPIRTATION

1.



Embrace history and Showers Company motto and holistic practices - *"From the tree to the trade."* Growth is about looking back from where you came.

2.



Building proximity to the B-Line Trail and popular Bloomington restaurants.

3.



Importance of natural light to one's well-being while working.



RESEARCH SUMMARY

- Humans are always growing and evolving as we age. The same can be said about the lifespan of a business.
- Health and wellbeing can be a difficult thing to balance with the modern working lifestyle.
- A workspace that promotes and embraces a healthy lifestyle is an attractive place for young professionals to plant roots.
- “Healthy things live, living things grow, growing things change”



**A space for people +
companies to **grow**
while embracing a
holistic lifestyle.**

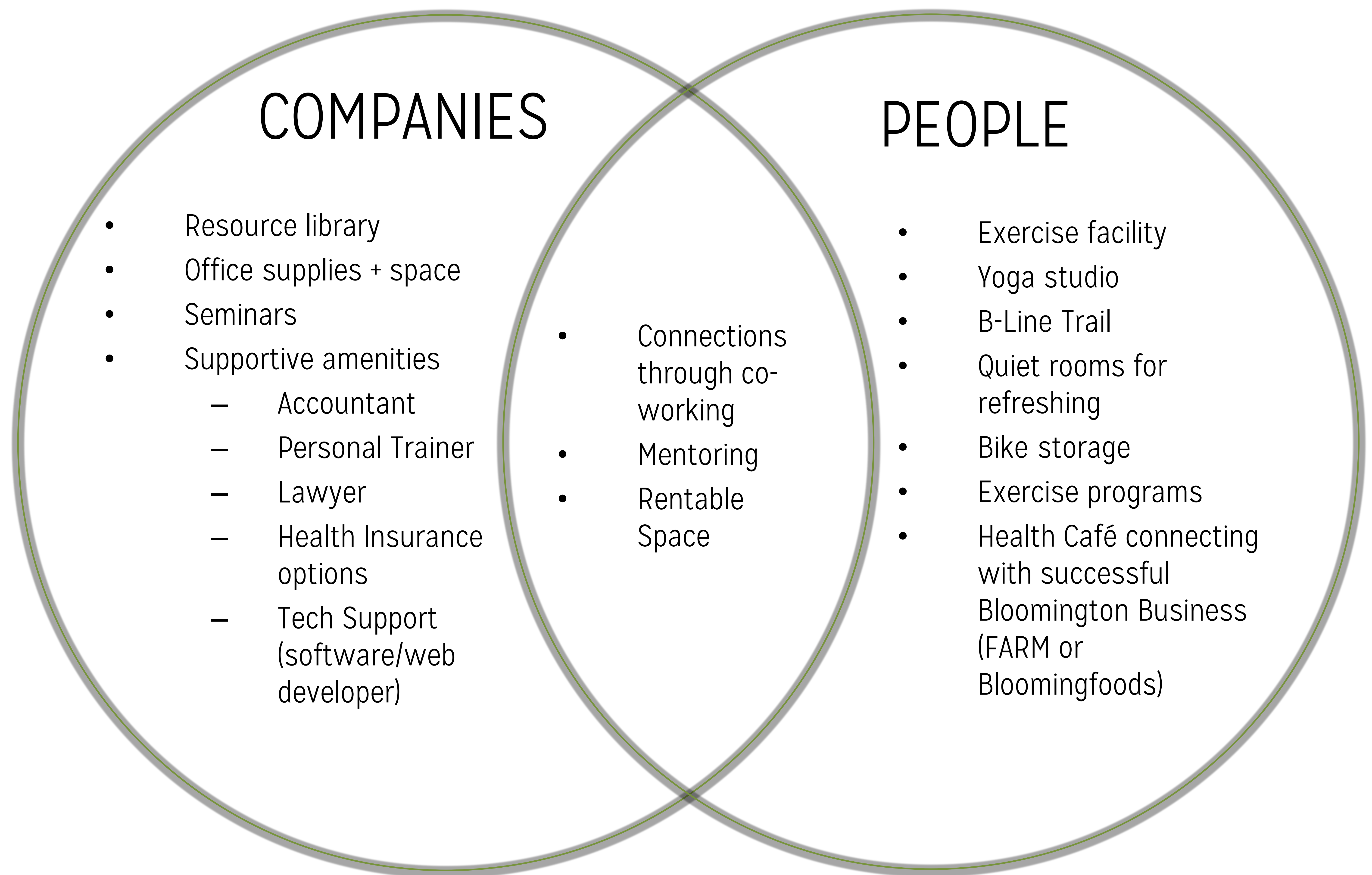


**A space for people
+ companies to
grow while
embracing a
holistic lifestyle.**



SCHEMATIC DIAGRAMS

How can this place help a person be healthy? A company be healthy? A community be healthy?



Floor Plan - Healthy Companies



- Resource Library
- Printing Supplies
- Event Space
- Resident Accountant
- Resident Lawyer
- Resident Software Developer

Floor Plan - Healthy People

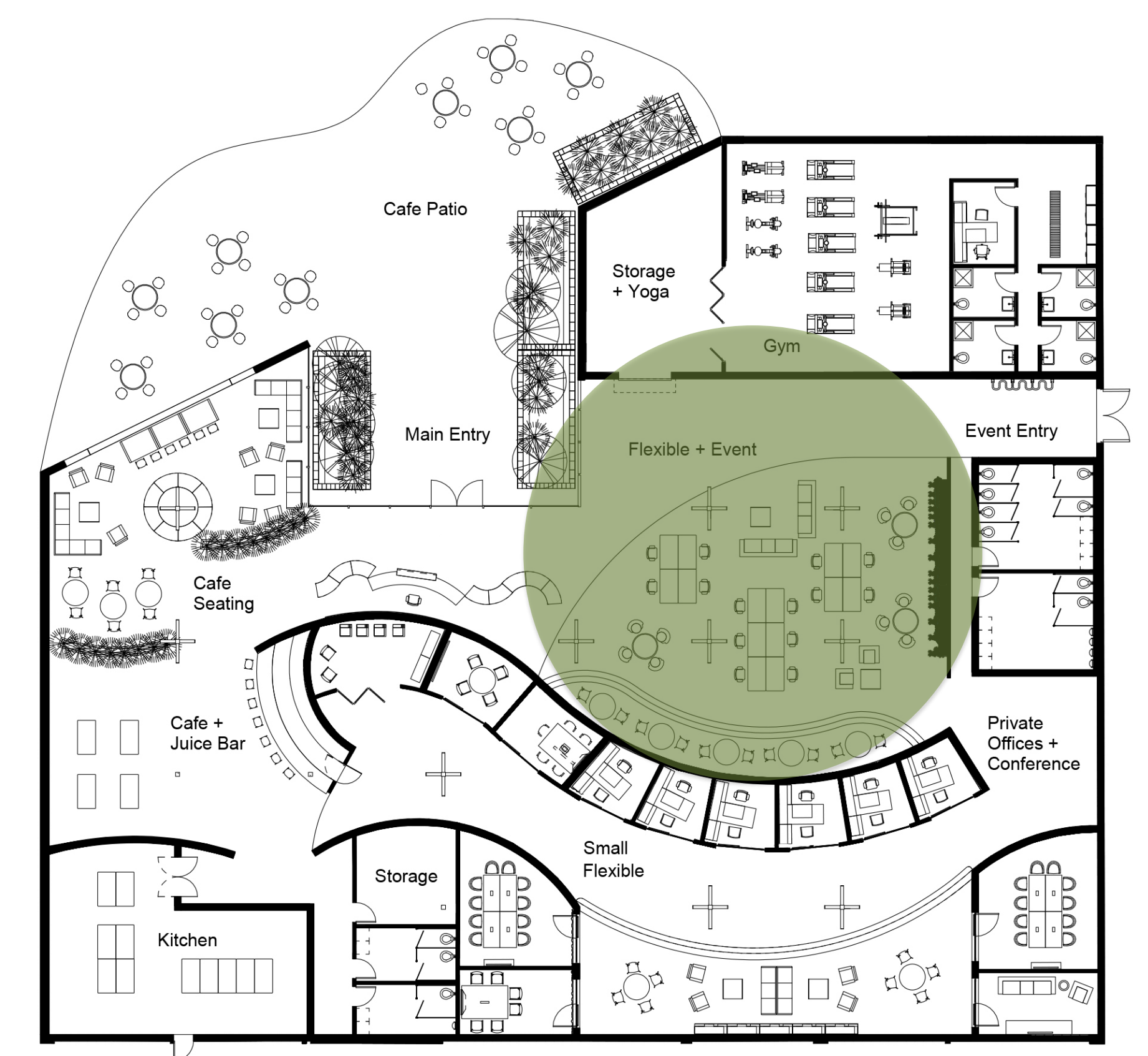


- Exercise Gym
- Yoga Studio
- Resident Personal Trainer
- Bike Storage
- Juice Bar
- Snack Cafe

Main Entrance



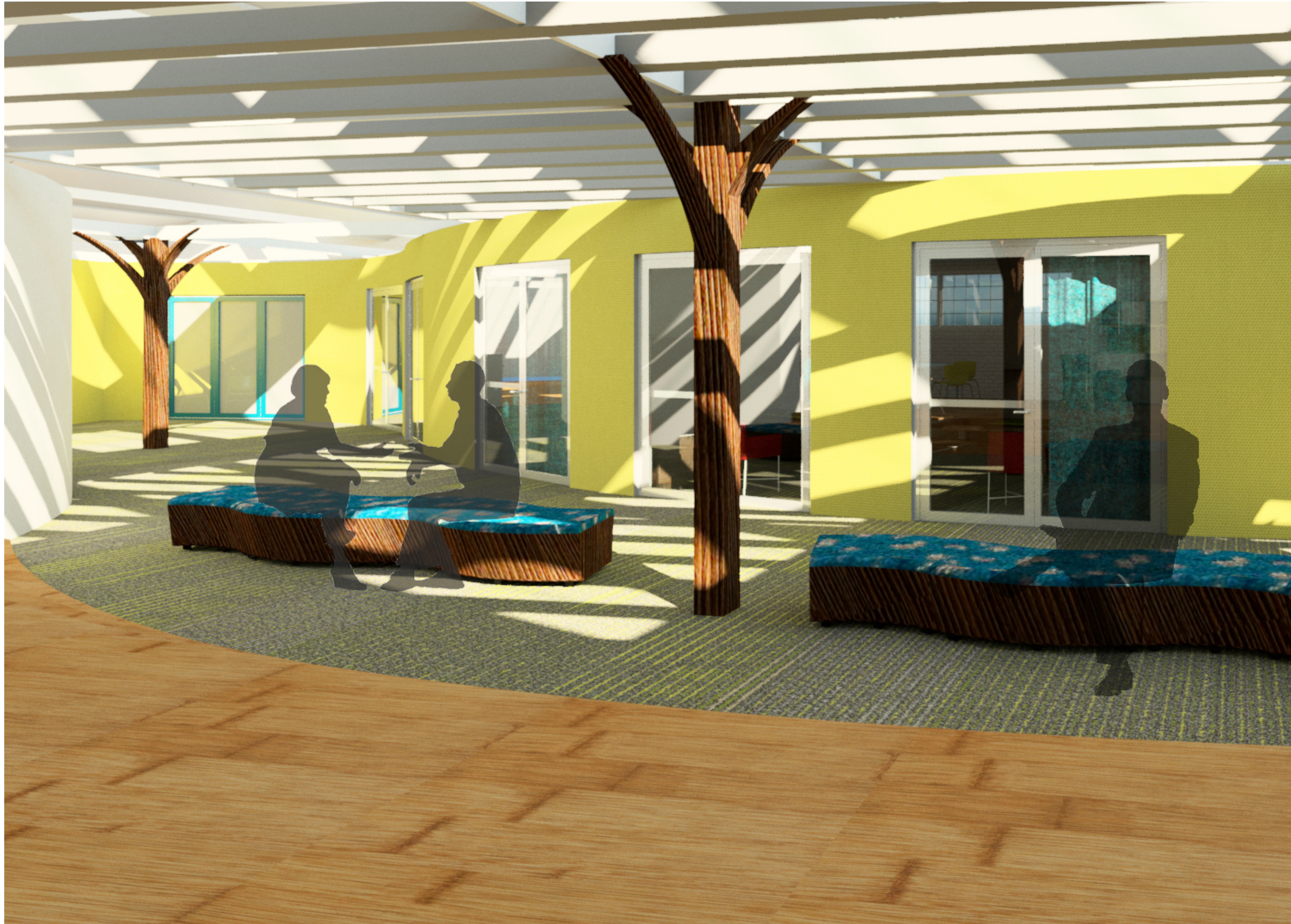
Flexible Co-working + Event Space



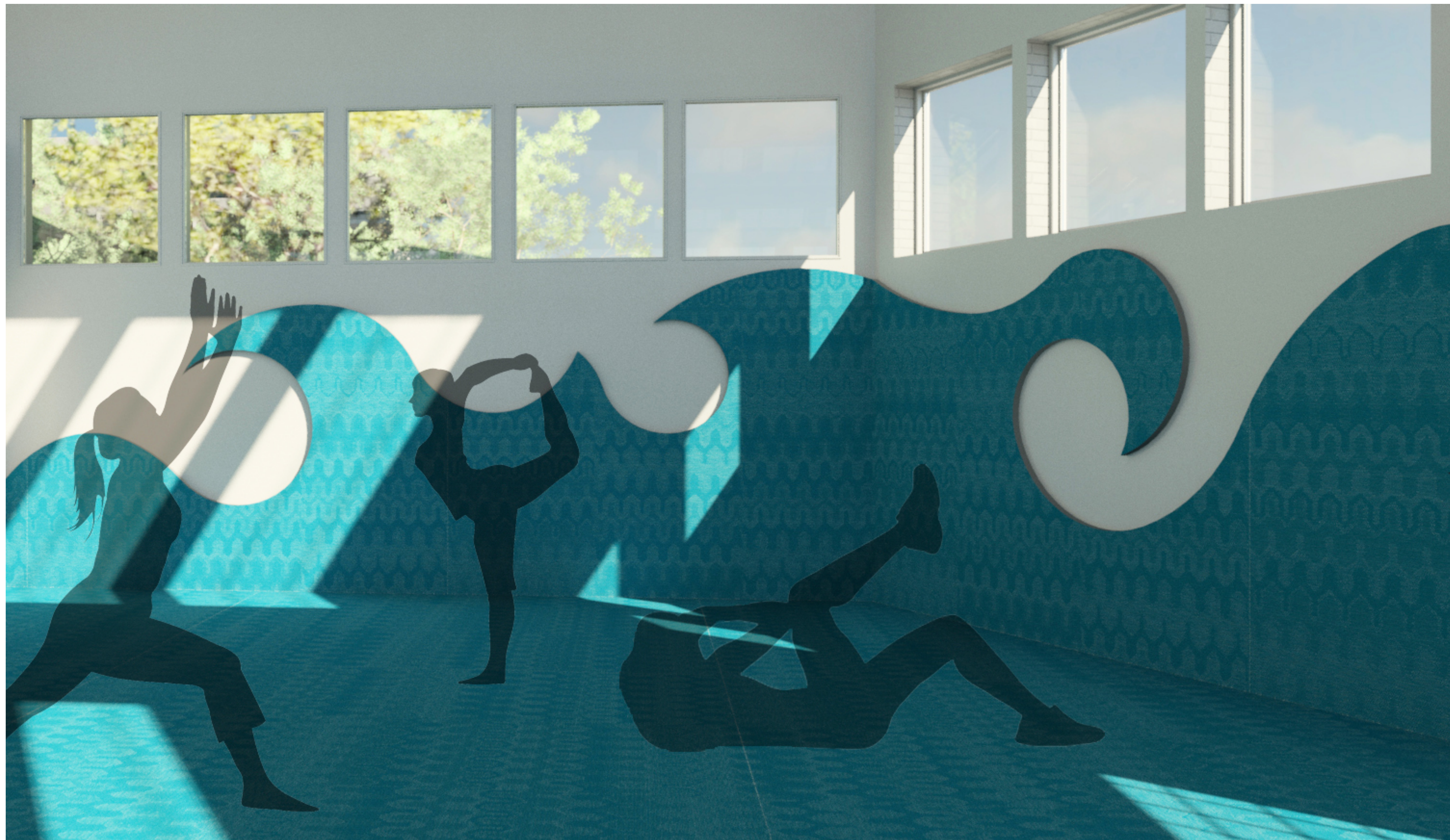
Flexible Co-work with Living Wall



Small Flexible Co-work + Private Offices



Yoga Studio



Cafe Seating



CULTIVATE
BLOOMINGTON

